



PRODUCT RANGE

environmental and botanical instrumentation



LIGHT



Light Sensor & hand-held Meter

A range of light sensors with a variety of responses for use in:- Agriculture, Horticulture, Meteorology, Plant Growth, Animal/Human /Building Studies, NDVI and Ultraviolet Studies

Sensors available with a choice of outputs to be compatible with most data loggers and controllers

Display meters for 1, 2 or 4 sensors simultaneously.

SpectroSense 2+ logging meter or DataHog loggers available for all sensors

All sensors fully sealed to IP65, most to IP68 for continuous outdoor exposure and limited submersion

Specially designed levelling and mounting accessories available

Calibrations traceable to National Standards



SpectroSense2 & Light sensors

MINIMET



Weather Station

Low cost, weather station utilising precision components and sensors

Permanent or temporary installation kits

Easily portable, ideal for short term research or monitoring projects

Completely weatherproof - no other enclosures required

Supplied with battery, solar or mains power options

Optional software available for crop yield prediction, crop disease prediction and irrigation scheduling, fast data offload and graphing - SkyeLynx Deluxe. Plus SkyeLynx Auto for automatic scheduled offloads

Available with a variety of sensors for meteorology, soil or water measurement

Supplied with free software for data offload/control via a PC

Remote site installations can be accessed by long cable (1km), phone line or GSM cellular modem link

DATAHOGS & DATAHOG SYSTEMS



DataHog loggers

Popular range of single or multichannel dataloggers

Weatherproof housing and connectors as standard

Easy to use, complete, independent units. Batteries last up to six months

Data download & logger setup via PC (cable and software supplied as standard).

Optional fast download and data graphing software (SkyeLynx Deluxe plus SkyeLynx Auto for scheduled offload) is available

Remote access options include:- cable up to 1km; dial up or leased phone line; or GSM cellular modem link

Versatile inputs for voltage, current, digital count, thermistors, thermocouples etc.

Can be used with all Skye's range of sensors, plus those from most other manufacturers

Relay contact outputs available switching at user set threshold for control and alarm applications

Dedicated 'packages' available with all sensors and cables e.g. for measuring rainfall, water depth logging, wind speed and direction records etc.

PLANT MOISTURE MEASUREMENT



Plant Moisture System

Measures plant moisture potential directly using the Scholander pressure bomb technique

- Choice of two systems - Digital pressure readout - large clear figures with 'hold' control
- Analogue pressure readout - dial gauge readout of pressure

Large chamber to accommodate various structures

Choice of chamber heads suitable for fleshy or woody samples

Can also be used for sap extraction

Models available for 40, 50 and 80 bar maximum working pressure

Available with accessories for use with nitrogen/air lines or regulators to suit 'scuba' diving air bottles

Compact and easily portable for field use



Relative Humidity and Air Temperature Measurement (rht+)



rht+ Probe mounted in a Radiation Screen

High specification humidity sensing element with good long term stability
 Wide range of humidity and air temperature probes
 Optional radiation screen with choice of brackets and mounts
 Innovative 'quick release' system for easily exchanging probes in screens
 Choice of outputs and supply voltage to suit all logging equipment

Surface Wetness Sensor



Surface Wetness Sensor

Designed to detect surface moisture
 Sensitivity from fine mists to water droplets
 All units have three types of output to suit most logging and recording equipment
 Grid heavily gold plated for corrosion resistance

Air Pressure Sensors



Air Pressure Sensor

Range of sensors to suit different environments and dataloggers/data acquisition systems
 Housing suitable for indoor or continuous outdoor use
 Available with a range of mounting accessories

Soil Moisture Tensiometers



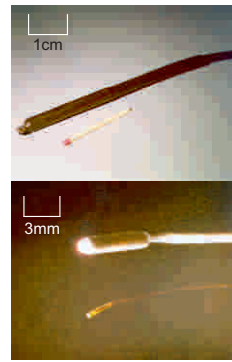
Electronic Tensiometer & DataHog



Septum Tensiometer & Hydr Sense Meter



Dial Tensiometer



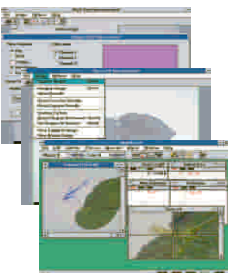
Temperature Probes

Precision made tensiometers for measuring soil water potential
 Ideal for irrigation control
 Use electronic tensiometers for unattended logging
 Use septum tensiometers and a needle sensor for instant measurements from many locations using the Hydr Sense meter
 Use the DataHog logger to record data from up to eight tensiometers at varying depths & locations
 Miniature tensiometers available for pots, trays and greenhouse applications
 Hydr Sense meter also has the ability to log data from temperature, water depth and rainfall sensors.
 Dial tensiometers for cost-effective instantaneous checks

Soil/Water/Surface Temperature Probes

Thermistor, PRT, voltage and 4-20mA outputs available
 A range of sizes to suit all applications
 The smallest has a tip 0.45mm diameter and a lead 0.1mm diameter for fine tasks e.g. leaf temperature measurement
 The toughest is 7.7mm diameter for soil & water temperature measurement

IMAGE ANALYSIS SOFTWARES



Screen Shots from Software

Choice of 3 softwares for botanical and general purpose analysis
 Leaf area and analysis software package gives total count of leaves, length, breadth, perimeter, area, plus diseased and/or damaged area
 Root length software calculates total root length of simple or complex root structures using well researched algorithms
 Full image analysis software captures, manipulates and measures a huge variety of parameters of any image
 Full true colour system
 Microscope mounts and a variety of cameras available
 Optional light box with adjustable lighting to give even lighting at the correct intensity-complete with camera mount

SEND FOR FURTHER
DETAILS ON ANY OF
OUR INSTRUMENTS.
DATASHEETS ALSO
AVAILABLE



FAXback +44 (0)1597 824812

Please send me details on.....



Water & Air

Water & Soil (Includes Temperature Probes)

Light



DataHogs and DataHog Systems



MiniMet

Plant Moisture Measurement

Image Analysis Softwares

Name _____

Company _____

Position _____

Address _____

Postcode _____ **Country** _____

Telephone _____

Fax _____

Email _____

Do you know anyone else who would be interested in receiving our literature?

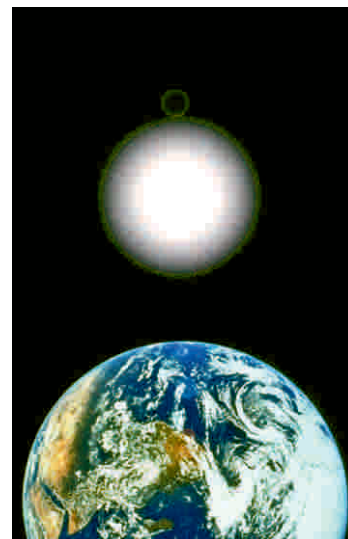
Name _____

Address _____

Please remove me from your mailing list
I am receiving duplicate copies of your literature

**THOUSANDS OF
CUSTOMERS IN OVER ONE
HUNDRED COUNTRIES**

Skye is a family run company and since 1983 has been exporting instruments to nearly every country in the world. All products are designed and manufactured within the Company and most are calibrated to National Standards at our own facilities. We pride ourselves on customer care and our flexibility when it comes to providing the customer with what they need.



Skye Instruments Ltd

21, Ddole Enterprise Park
Llandrindod Wells
Powys LD1 6DF
United Kingdom

TEL +44(0)1597 824811

FAX +44(0)1597 824812

EMAIL skyeemail@skyeinstruments.com

www.skyeinstruments.com



**environmental and botanical
instrumentation**